

Courtesy Of Amritpal S Hunjan Of RE/MAX River City

\$225,000 - 63 16231 19 Avenue, Edmonton

MLS® #E4422600

\$225,000

1 Bedroom, 1.00 Bathroom, 616 sqft
Condo / Townhouse on 0.00 Acres

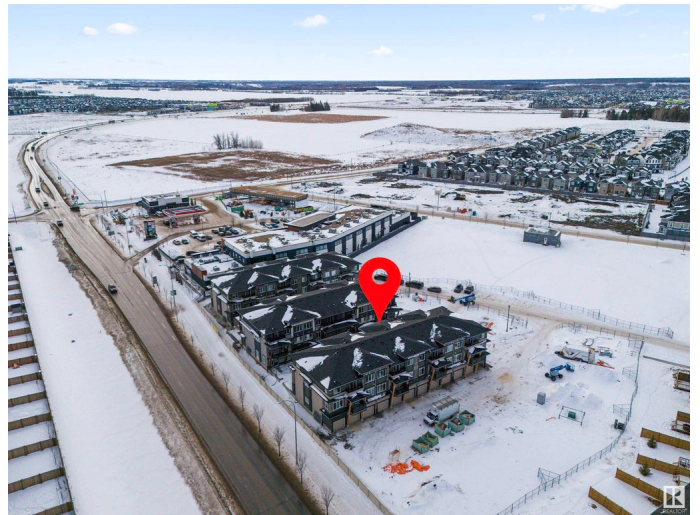
Glenridding Ravine, Edmonton, AB

Welcome to Essential Glenridding, where luxury meets convenience. This brand-new 1-bedroom + DEN, 1-bath, condo boasts stylish finishes throughout. The main floor features an attached single garage, an open-concept layout with a full bath, laundry room, bedroom, and den with a closet. Enjoy your private patio, perfect for outdoor relaxation or entertaining. The modern kitchen includes quartz countertops and upgraded cabinets, making it a fantastic space to cook or host! This unit is not one to miss! It also comes with a SINGLE CAR GARAGE!

Built in 2023

Essential Information

MLS® #	E4422600
Price	\$225,000
Bedrooms	1
Bathrooms	1.00
Full Baths	1
Square Footage	616
Acres	0.00
Year Built	2023
Type	Condo / Townhouse
Sub-Type	Townhouse
Style	Single Level Apartment
Status	Active



Community Information

Address	63 16231 19 Avenue
Area	Edmonton
Subdivision	Glenridding Ravine
City	Edmonton
County	ALBERTA
Province	AB
Postal Code	T6W 5C6

Amenities

Amenities	Ceiling 9 ft., Detectors Smoke, Vinyl Windows, See Remarks
Parking	Single Garage Attached

Interior

Appliances	Dishwasher-Built-In, Dryer, Microwave Hood Fan, Refrigerator, Stove-Electric, Washer, Window Coverings
Heating	Forced Air-1, Natural Gas
Stories	1
Has Basement	Yes
Basement	None, No Basement

Exterior

Exterior	Wood, Stone, Vinyl
Exterior Features	Airport Nearby, Golf Nearby, Landscaped, Park/Reserve, Playground Nearby, Schools, Ski Hill Nearby
Roof	Asphalt Shingles
Construction	Wood, Stone, Vinyl
Foundation	Concrete Perimeter

School Information

Elementary	Dr. Margaret-Ann Armour
Middle	Dr. Margaret-Ann Armour
High	Lillian Osborne School

Additional Information

Date Listed	February 22nd, 2025
Days on Market	43
Zoning	Zone 56
Condo Fee	\$137

DATA IS DEEMED RELIABLE BUT IS NOT GUARANTEED ACCURATE BY THE REALTORS® ASSOCIATION OF EDMONTON. COPYRIGHT 2025 BY THE REALTORS® ASSOCIATION OF EDMONTON. ALL RIGHTS RESERVED. Trademarks are owned or controlled by the Canadian Real Estate Association (CREA) and identify real estate professionals who are members of CREA (REALTOR®, REALTORS®) and/or the quality of services they provide (MLS®, Multiple Listing Service®)

Listing information last updated on April 6th, 2025 at 7:32am MDT