

\$799,900 - 6065 Crawford Drive, Edmonton

MLS® #E4423580

\$799,900

5 Bedroom, 4.00 Bathroom, 2,453 sqft
Single Family on 0.00 Acres

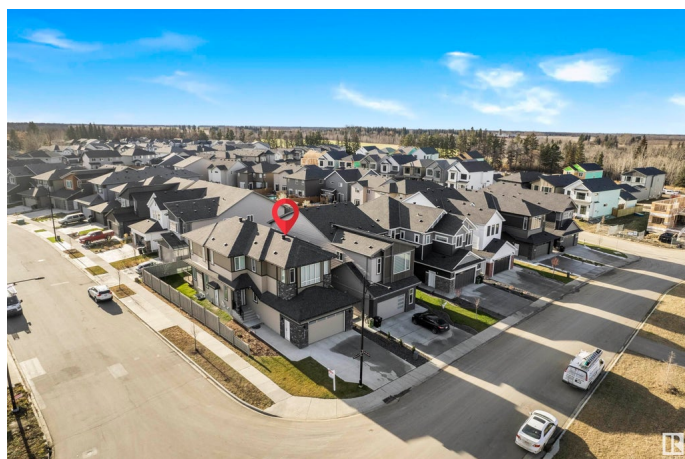
Chappelle Area, Edmonton, AB

This elegant 2,453 sq ft, 2-storey single-family home, featuring a convenient 2-bedroom in-law suite with second kitchen, is ideally situated on a corner lot with views of scenic trails. The main floor impresses with its lofty 10-foot ceilings, combining engineered hardwood and tile for a refined look. A well-appointed den and a full 3-piece bath add functionality and style. The custom kitchen features built-in appliances, a spacious island with waterfall countertops, and ample cabinetry for storage. The open-to-above living room creates a dramatic focal point, highlighted by a feature wall and an electric fireplace. Upstairs, a spacious front-facing bonus room offers a versatile family space, while two bedrooms, a 4-piece bath, and a laundry room add practicality. The luxurious master suite boasts a custom 5-piece ensuite and a generous walk-in closet, perfect for relaxation and privacy. Modern motor-operated blinds add convenience, enhancing the home's thoughtful, upscale design.

Built in 2022

Essential Information

MLS® #	E4423580
Price	\$799,900
Bedrooms	5



Bathrooms	4.00
Full Baths	4
Square Footage	2,453
Acres	0.00
Year Built	2022
Type	Single Family
Sub-Type	Detached Single Family
Style	2 Storey
Status	Active

Community Information

Address	6065 Crawford Drive
Area	Edmonton
Subdivision	Chappelle Area
City	Edmonton
County	ALBERTA
Province	AB
Postal Code	T6W 4L6

Amenities

Amenities	Ceiling 10 ft., Ceiling 9 ft., No Animal Home, No Smoking Home, 9 ft. Basement Ceiling
Parking	Double Garage Attached

Interior

Interior Features	ensuite bathroom
Appliances	Dishwasher-Built-In, Dryer, Oven-Microwave, Refrigerator, Stove-Electric, Washer
Heating	Forced Air-1, Natural Gas
Stories	2
Has Basement	Yes
Basement	Full, Finished

Exterior

Exterior	Wood, Vinyl
Exterior Features	Airport Nearby, Fenced, Golf Nearby, Park/Reserve, Playground Nearby
Roof	Asphalt Shingles
Construction	Wood, Vinyl
Foundation	Concrete Perimeter

Additional Information

Date Listed March 1st, 2025

Days on Market 41

Zoning Zone 55

DATA IS DEEMED RELIABLE BUT IS NOT GUARANTEED ACCURATE BY THE REALTORS® ASSOCIATION OF EDMONTON. COPYRIGHT 2025 BY THE REALTORS® ASSOCIATION OF EDMONTON. ALL RIGHTS RESERVED. Trademarks are owned or controlled by the Canadian Real Estate Association (CREA) and identify real estate professionals who are members of CREA (REALTOR®, REALTORS®) and/or the quality of services they provide (MLS®, Multiple Listing Service®)

Listing information last updated on April 11th, 2025 at 3:47pm MDT