

\$525,900 - 23222 Twp 560, Gibbons

MLS® #E4423921

\$525,900

3 Bedroom, 1.00 Bathroom, 1,116 sqft
Single Family on 0.00 Acres

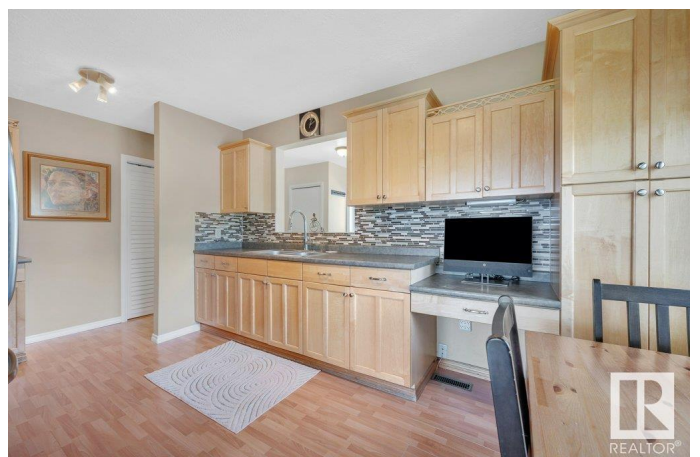
Gibbons, Gibbons, AB

Experience country living within the town limits of Gibbons! This bungalow is situated on 5.66 acres of picturesque land, featuring a large garden, a private pond with a firepit area, a stamped concrete patio at the rear, and a south-facing front deck. The property includes numerous outbuildings with ample space to build a shop. In recent years, the home has seen many upgrades, including new flooring, a kitchen renovation, updated appliances, new doors, and most windows. The well-designed layout includes three bedrooms, a 4-piece bathroom, a living room with a view, a beautiful kitchen, and laundry facilities, all on one floor.

Built in 1971

Essential Information

| | |
|----------------|------------------------|
| MLS® # | E4423921 |
| Price | \$525,900 |
| Bedrooms | 3 |
| Bathrooms | 1.00 |
| Full Baths | 1 |
| Square Footage | 1,116 |
| Acres | 0.00 |
| Year Built | 1971 |
| Type | Single Family |
| Sub-Type | Detached Single Family |
| Style | Bungalow |



Status Active

Community Information

Address 23222 Twp 560
Area Gibbons
Subdivision Gibbons
City Gibbons
County ALBERTA
Province AB
Postal Code T0A 1N0

Amenities

Amenities Crawl Space, No Animal Home, No Smoking Home, Patio
Parking RV Parking, Single Garage Detached

Interior

Interior Features ensuite bathroom
Appliances Dryer, Microwave Hood Fan, Refrigerator, Storage Shed, Stove-Gas, Washer, Window Coverings
Heating Forced Air-1, Natural Gas
Stories 1
Has Basement Yes
Basement None, No Basement

Exterior

Exterior Wood, Vinyl
Exterior Features Fruit Trees/Shrubs, Landscaped, Level Land, Stream/Pond
Roof Asphalt Shingles
Construction Wood, Vinyl
Foundation Grade Beam

Additional Information

Date Listed March 3rd, 2025
Days on Market 44
Zoning Zone 62

DATA IS DEEMED RELIABLE BUT IS NOT GUARANTEED ACCURATE BY THE REALTORS® ASSOCIATION OF EDMONTON. COPYRIGHT 2025 BY THE REALTORS® ASSOCIATION OF EDMONTON. ALL RIGHTS RESERVED. Trademarks are owned or controlled by the Canadian Real Estate Association (CREA) and identify real estate professionals who are members of CREA (REALTOR®, REALTORS®) and/or the quality of services they provide (MLS®, Multiple Listing Service®)

Listing information last updated on April 15th, 2025 at 11:17pm MDT