

\$319,000 - 12323 107 Street, Edmonton

MLS® #E4424475

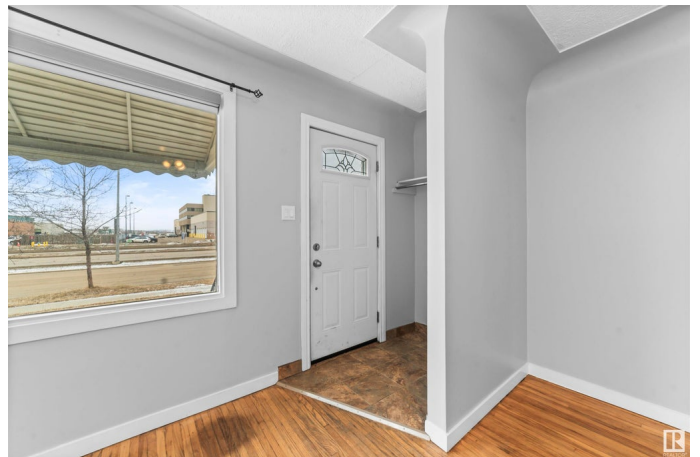
\$319,000

3 Bedroom, 2.00 Bathroom, 816 sqft

Single Family on 0.00 Acres

Westwood (Edmonton), Edmonton, AB

INVESTOR ALERT or FIRST-TIME BUYERS! Charming 3-bed, 2-bath bungalow with a fully finished basement with SIDE ENTRY (from back) in quiet Westwood, near NAIT and the Yellowhead. Updates include a city sewer mainline upgrade, 100 amp electrical service, weeping tile, new sump pump, and backflow valve. Features an oversized detached single garage and ample street parking. Spacious living/dining areas. Perfect for young families, first-time homeowners, or investors. Steps from NAIT, minutes to Kingsway Mall and downtown Edmonton. Great shopping, dining, and entertainment options nearby.



Built in 1953

Essential Information

MLS® #	E4424475
Price	\$319,000
Bedrooms	3
Bathrooms	2.00
Full Baths	2
Square Footage	816
Acres	0.00
Year Built	1953
Type	Single Family
Sub-Type	Detached Single Family
Style	Bungalow

Status Active

Community Information

Address 12323 107 Street
Area Edmonton
Subdivision Westwood (Edmonton)
City Edmonton
County ALBERTA
Province AB
Postal Code T5G 2T1

Amenities

Amenities See Remarks
Parking Over Sized, Single Garage Detached

Interior

Appliances Dryer, Refrigerator, Washer, Stoves-Two
Heating Forced Air-2, Natural Gas
Stories 2
Has Basement Yes
Basement Full, Finished

Exterior

Exterior Wood, Vinyl
Exterior Features Schools, Shopping Nearby
Roof Asphalt Shingles
Construction Wood, Vinyl
Foundation Concrete Perimeter

Additional Information

Date Listed March 7th, 2025
Days on Market 29
Zoning Zone 08

DATA IS DEEMED RELIABLE BUT IS NOT GUARANTEED ACCURATE BY THE REALTORS® ASSOCIATION OF EDMONTON. COPYRIGHT 2025 BY THE REALTORS® ASSOCIATION OF EDMONTON. ALL RIGHTS RESERVED. Trademarks are owned or controlled by the Canadian Real Estate Association (CREA) and identify real estate professionals who are members of CREA (REALTOR®, REALTORS®) and/or the quality of services they provide (MLS®, Multiple Listing Service®)

Listing information last updated on April 5th, 2025 at 2:02pm MDT