

Courtesy Of Michael Trache Of MaxWell Challenge Realty

\$799,900 - 3075 Carpenter Landing Landing, Edmonton

MLS® #E4426273

\$799,900

4 Bedroom, 3.50 Bathroom, 2,065 sqft

Single Family on 0.00 Acres

Chappelle Area, Edmonton, AB

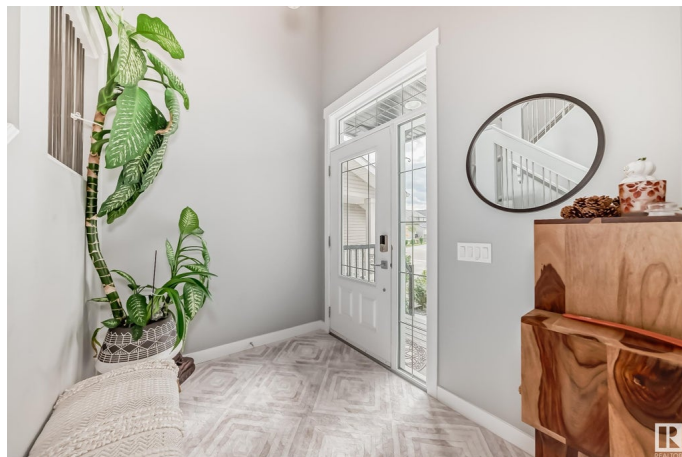
Located in the most desired Chappelle Gardens neighborhood, this Daytona custom-built home features a fully developed walk-out basement, designed & loaded with luxurious upgrades. The beautiful open floor plan welcomes you with a grand entryway leading to a spacious living area with a massive stone gas fireplace. Island kitchen with walk-in & butler pantry, all new stainless steel appliances. 2nd floor bonus room, large master suite with modern electric fireplace, 5 piece spa like ensuite, large shower, jetted soaker tub & convenient laundry. Premium hardwood, ceramic floors, quartz counters, custom cabinetry throughout, built-in home theatre, central A/C, central vacuum, heated double attached garage epoxied, floor drain, 8' door. Permanent Astoria Christmas lights, light-up walkway stairs, composite decking with self draining upper patio, stamped concrete grade level patio, hot tub hook up ready. This turnkey home is designed for luxury & comfort, making it the perfect place to create lasting memories.

Built in 2015

Essential Information

MLS® # E4426273

Price \$799,900



Bedrooms	4
Bathrooms	3.50
Full Baths	3
Half Baths	1
Square Footage	2,065
Acres	0.00
Year Built	2015
Type	Single Family
Sub-Type	Detached Single Family
Style	2 Storey
Status	Active

Community Information

Address	3075 Carpenter Landing Landing
Area	Edmonton
Subdivision	Chappelle Area
City	Edmonton
County	ALBERTA
Province	AB
Postal Code	T6W 2Y9

Amenities

Amenities	Air Conditioner, Detectors Smoke, Gazebo, No Animal Home, No Smoking Home, Walkout Basement, Vacuum System-Roughed-In, Natural Gas BBQ Hookup
Parking Spaces	4
Parking	Double Garage Attached, Heated, Insulated, See Remarks

Interior

Interior Features	ensuite bathroom
Appliances	Air Conditioning-Central, Alarm/Security System, Dishwasher-Built-In, Dryer, Garage Opener, Hood Fan, Refrigerator, Storage Shed, Stove-Electric, Vacuum Systems, Washer, Window Coverings, Wine/Beverage Cooler, TV Wall Mount, Garage Heater
Heating	Forced Air-1, Natural Gas
Fireplace	Yes
Fireplaces	Stone Facing
Stories	3
Has Basement	Yes

Basement Full, Finished

Exterior

Exterior Wood, Stone, Vinyl, Hardie Board Siding

Exterior Features Airport Nearby, Fenced, Playground Nearby, Schools, Shopping Nearby

Roof Asphalt Shingles

Construction Wood, Stone, Vinyl, Hardie Board Siding

Foundation Concrete Perimeter

School Information

Elementary Garth Worthington School

Middle Garth Worthington School

Additional Information

Date Listed March 18th, 2025

Days on Market 24

Zoning Zone 55

DATA IS DEEMED RELIABLE BUT IS NOT GUARANTEED ACCURATE BY THE REALTORS® ASSOCIATION OF EDMONTON. COPYRIGHT 2025 BY THE REALTORS® ASSOCIATION OF EDMONTON. ALL RIGHTS RESERVED. Trademarks are owned or controlled by the Canadian Real Estate Association (CREA) and identify real estate professionals who are members of CREA (REALTOR®, REALTORS®) and/or the quality of services they provide (MLS®, Multiple Listing Service®)

Listing information last updated on April 11th, 2025 at 12:17pm MDT