

# \$579,900 - 1929 209a Street, Edmonton

MLS® #E4427357

**\$579,900**

3 Bedroom, 2.50 Bathroom, 1,988 sqft  
Single Family on 0.00 Acres

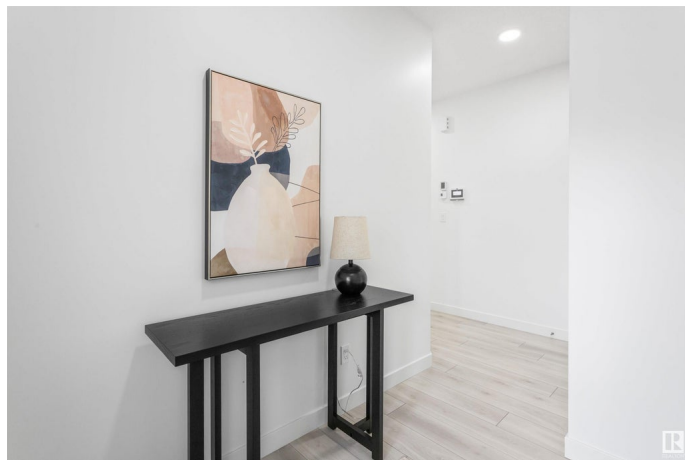
Stillwater, Edmonton, AB

Nestled in the picturesque Riverview area of West Edmonton, Verge at Stillwater is a community that seamlessly blends natural features like wetlands, parks, and trails with convenient amenities such as schools, recreation facilities, and shopping. This single-family home, The Otis-24' is built with your growing family in mind. It features 3 bedrooms, 2.5 bathrooms and an expansive walk-in closet in the primary bedroom. Enjoy extra living space on the main floor with the laundry room on the second floor. The 9' ceilings on the main floor, (w/ an 18' open to below concept in the living room), and quartz countertops throughout blends style and functionality for your family to build endless memories. **\*\*PLEASE NOTE\*\* PICTURES ARE OF SIMILAR HOME; ACTUAL HOME, PLANS, FIXTURES, AND FINISHES MAY VARY AND ARE SUBJECT TO AVAILABILITY/CHANGES WITHOUT NOTICE.**

Built in 2025

## Essential Information

|           |           |
|-----------|-----------|
| MLS® #    | E4427357  |
| Price     | \$579,900 |
| Bedrooms  | 3         |
| Bathrooms | 2.50      |



|                |                        |
|----------------|------------------------|
| Full Baths     | 2                      |
| Half Baths     | 1                      |
| Square Footage | 1,988                  |
| Acres          | 0.00                   |
| Year Built     | 2025                   |
| Type           | Single Family          |
| Sub-Type       | Detached Single Family |
| Style          | 2 Storey               |
| Status         | Active                 |

### **Community Information**

|             |                  |
|-------------|------------------|
| Address     | 1929 209a Street |
| Area        | Edmonton         |
| Subdivision | Stillwater       |
| City        | Edmonton         |
| County      | ALBERTA          |
| Province    | AB               |
| Postal Code | T6M 3C2          |

### **Amenities**

|           |                        |
|-----------|------------------------|
| Amenities | Ceiling 9 ft.          |
| Parking   | Double Garage Attached |

### **Interior**

|                   |                           |
|-------------------|---------------------------|
| Interior Features | ensuite bathroom          |
| Appliances        | See Remarks               |
| Heating           | Forced Air-1, Natural Gas |
| Stories           | 2                         |
| Has Basement      | Yes                       |
| Basement          | Full, Unfinished          |

### **Exterior**

|                   |   |
|-------------------|---|
| Exterior          | Wood, Vinyl                             |
| Exterior Features | Not Fenced, Not Landscaped, See Remarks |
| Roof              | Asphalt Shingles                        |
| Construction      | Wood, Vinyl                             |
| Foundation        | Concrete Perimeter                      |

### **Additional Information**

Date Listed March 25th, 2025

Days on Market 14

Zoning Zone 57

DATA IS DEEMED RELIABLE BUT IS NOT GUARANTEED ACCURATE BY THE REALTORS® ASSOCIATION OF EDMONTON. COPYRIGHT 2025 BY THE REALTORS® ASSOCIATION OF EDMONTON. ALL RIGHTS RESERVED. Trademarks are owned or controlled by the Canadian Real Estate Association (CREA) and identify real estate professionals who are members of CREA (REALTOR®, REALTORS®) and/or the quality of services they provide (MLS®, Multiple Listing Service®)

Listing information last updated on April 8th, 2025 at 6:17am MDT