

\$219,000 - 22 Willowdale Place, Edmonton

MLS® #E4427918

\$219,000

3 Bedroom, 1.50 Bathroom, 920 sqft
Condo / Townhouse on 0.00 Acres

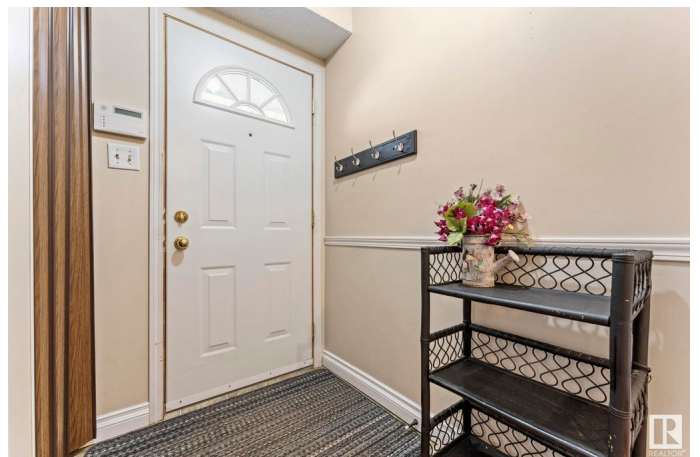
Ormsby Place, Edmonton, AB

Don't miss this rare find in Ormsby Place - this is one of the few townhomes in the area with a private yard, featuring brand-new fence and grading in 2024! This well-kept 3 bedroom, 1.5 bathroom townhome offers 1,016 sq ft of comfortable living space. Freshly painted bedrooms, bathrooms and living room. Fully finished basement (2024) for extra living space. New washing machine (2024), Hot Water Tank (2018), Furnace (2008). Don't miss this fantastic opportunity to own a move-in-ready home in a great location, close to schools, walking trails, parks, shopping centres all while in close proximity to the Henday & Whitemud for easy access around the city. *Primary bedroom photos are virtually staged.

Built in 1976

Essential Information

| | |
|----------------|-----------|
| MLS® # | E4427918 |
| Price | \$219,000 |
| Bedrooms | 3 |
| Bathrooms | 1.50 |
| Full Baths | 1 |
| Half Baths | 1 |
| Square Footage | 920 |
| Acres | 0.00 |



| | |
|------------|-------------------|
| Year Built | 1976 |
| Type | Condo / Townhouse |
| Sub-Type | Townhouse |
| Style | 2 Storey |
| Status | Active |

Community Information

| | |
|-------------|---------------------|
| Address | 22 Willowdale Place |
| Area | Edmonton |
| Subdivision | Ormsby Place |
| City | Edmonton |
| County | ALBERTA |
| Province | AB |
| Postal Code | T5T 1Z4 |

Amenities

| | |
|-----------|---------------------------------|
| Amenities | No Animal Home, No Smoking Home |
| Parking | Stall |

Interior

| | |
|--------------|--|
| Appliances | Dishwasher-Built-In, Dryer, Refrigerator, Stove-Electric, Washer, Window Coverings |
| Heating | Forced Air-1, Natural Gas |
| Stories | 3 |
| Has Basement | Yes |
| Basement | Full, Finished |

Exterior

| | |
|-------------------|---|
| Exterior | Wood, Stucco, Vinyl |
| Exterior Features | Fenced, Low Maintenance Landscape, Playground Nearby, Public Transportation, Schools, Shopping Nearby |
| Roof | Asphalt Shingles |
| Construction | Wood, Stucco, Vinyl |
| Foundation | Concrete Perimeter |

Additional Information

| | |
|----------------|------------------|
| Date Listed | March 28th, 2025 |
| Days on Market | 14 |
| Zoning | Zone 20 |

Condo Fee \$414

DATA IS DEEMED RELIABLE BUT IS NOT GUARANTEED ACCURATE BY THE REALTORS® ASSOCIATION OF EDMONTON. COPYRIGHT 2025 BY THE REALTORS® ASSOCIATION OF EDMONTON. ALL RIGHTS RESERVED. Trademarks are owned or controlled by the Canadian Real Estate Association (CREA) and identify real estate professionals who are members of CREA (REALTOR®, REALTORS®) and/or the quality of services they provide (MLS®, Multiple Listing Service®)

Listing information last updated on April 11th, 2025 at 7:32pm MDT