

Courtesy Of Camron Rahmanian Of MaxWell Polaris

## \$450,000 - 7212 138 Avenue, Edmonton

MLS® #E4432735

**\$450,000**

4 Bedroom, 2.00 Bathroom, 1,064 sqft

Single Family on 0.00 Acres

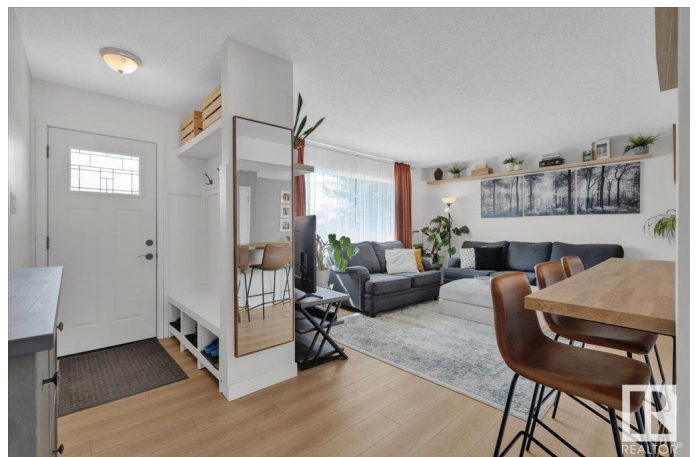
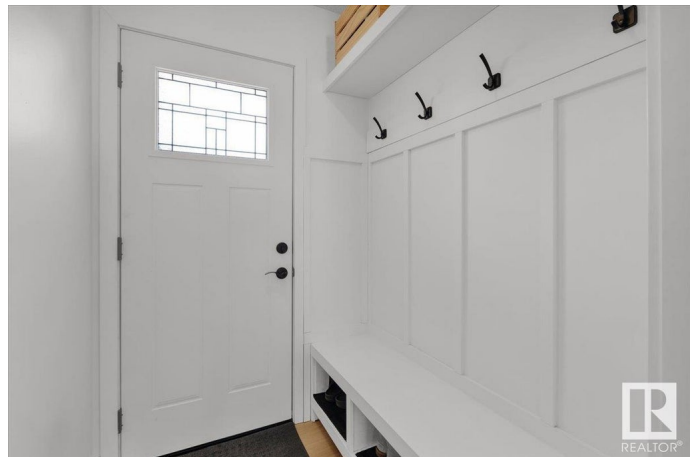
Kildare, Edmonton, AB

This beautifully upgraded bungalow home is a must see gem in the mature neighbourhood of Kildare. This house is renovated and move-in ready! The bright main floor features updated entry storage, renovated kitchen with tons of customized storage, chef pantry, and updated appliances. There are 3 generous bdrms on main floor with 4 pc bath and another bdrm in basement with 4 pc bath. Basement offers tons of space including a rec room with a wet bar and laundry room. Recent upgrades include: LVP flooring (2024), kitchen remodel (2024) with new refrigerator and dishwasher (2023), new front/ back doors (2022) landscaping (2021), garage insulation and furnace/ gas line (2022), basement bathroom remodel (2023), carpet tile and linoleum tile (2025). The heated and insulated garage offers plenty of space, plus an additional shed in yard. The fully fenced yard also features extra parking/ RV storage pad, mature fruit trees, and easy to maintain landscaping.

Built in 1967

### Essential Information

MLS® #	E4432735
Price	\$450,000
Bedrooms	4
Bathrooms	2.00



Full Baths	2
Square Footage	1,064
Acres	0.00
Year Built	1967
Type	Single Family
Sub-Type	Detached Single Family
Style	Bungalow
Status	Active

### **Community Information**

Address	7212 138 Avenue
Area	Edmonton
Subdivision	Kildare
City	Edmonton
County	ALBERTA
Province	AB
Postal Code	T5C 2L8

### **Amenities**

Amenities	Deck, Hot Water Natural Gas, Parking-Extra, Wet Bar
Parking	Double Garage Detached, RV Parking

### **Interior**

Appliances	Dishwasher-Built-In, Dryer, Garage Control, Garage Opener, Hood Fan, Oven-Microwave, Refrigerator, Storage Shed, Stove-Electric, Washer, Refrigerators-Two, Garage Heater
Heating	Forced Air-1, Natural Gas
Stories	2
Has Basement	Yes
Basement	Full, Finished

### **Exterior**

Exterior	Wood, Stucco
Exterior Features	Back Lane, Fenced, Flat Site, Fruit Trees/Shrubs, Landscaped, Low Maintenance Landscape, Park/Reserve, Public Transportation, Schools, Shopping Nearby
Roof	Asphalt Shingles
Construction	Wood, Stucco
Foundation	Concrete Perimeter

## School Information

Elementary	Kildare, St Anne
Middle	Londonderry, Cardinal Leger
High	MELezerte, O'Leary

## Additional Information

Date Listed	April 25th, 2025
Days on Market	1
Zoning	Zone 02

DATA IS DEEMED RELIABLE BUT IS NOT GUARANTEED ACCURATE BY THE REALTORS® ASSOCIATION OF EDMONTON. COPYRIGHT 2025 BY THE REALTORS® ASSOCIATION OF EDMONTON. ALL RIGHTS RESERVED. Trademarks are owned or controlled by the Canadian Real Estate Association (CREA) and identify real estate professionals who are members of CREA (REALTOR®, REALTORS®) and/or the quality of services they provide (MLS®, Multiple Listing Service®)

Listing information last updated on April 26th, 2025 at 1:17pm MDT